

A. Kit Care Functional Francis Torso

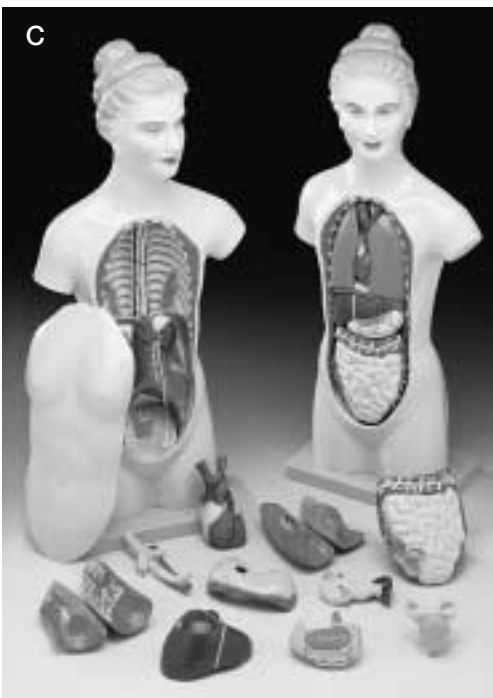
This male/female torso features 32 parts, including 3 removable vertebrae, 3 spinal cord segments, a female breast plate, head, eyeball, 4-part brain, 2 half lungs, 2-part heart, liver, one-half kidney, duodenum with pancreas and spleen, 2-part stomach, intestines, 4-part male genitalia, 2-part female genitalia with removable fetus, and a gender neutral bladder cover. Mounted on base, key card included. Size: 33½" tall. Express delivery extra-call for quote.

CMT-32 Kit Care Functional Francis Torso

B. Kit Care Tall Paul Torso

Hand painted and meticulously assembled to simulate human anatomy. Dissects into 19 parts: torso, head (2 parts), brain, lung (4 parts), heart, trachea, esophagus and descending aorta, diaphragm, stomach, duodenum with pancreas and spleen, intestines, cecum, kidney, bladder (2 parts), liver. Mounted on a base. Includes a key card with 75 structures labeled. Size: 33½" tall. Express delivery extra-call for quote.

CMT-5 Kit Care Tall Paul Torso



C. Kit Care Sweet Sue Torso

Sue is a female torso with a removable breast cover that reveals 14 dissects parts: torso, breast plate, lung (4 parts), heart, trachea and esophagus, diaphragm, stomach, liver, pancreas and spleen, bladder and uterus, and intestines. Mounted on a base. Includes a key card, with 71 structures labeled. Size: 18" tall.

CFT-1 Kit Care Sweet Sue Torso

D. Kit Care Peter/Petra Torso

An outstanding value, this torso dissects into a total of 13 parts. 2-part head with removable half brain, 2 lungs, heart, liver, intestines, 2 part female genitalia, 2-part male genitalia, and torso on base. Size: 16½" tall.

CMT-3 Kit Care Peter/Petra Torso





Kit Care Super Skin Model

A greatly enlarged (105 times) crosssectional view of the human skin showing three layers and a close-up view of a hair follicle, sweat gland, fatty tissue and more. Front, side and back view. Does not dissect. Mounted on a base. Includes a key card with 46 labeled structures. Size: 11" x 4" x 13".

CH-4 Kit Care Super Skin Model



Kit Care Brain Model

A plastic replica of a human brain showing multiple views. Great for hands-on study of brain anatomy. Sits on sturdy base. Includes a key card with 61 structures labeled. Dissects into 3 parts. Size: 5" x 6" x 6½".

CH-1 Kit Care Brain Model



Kit Care Brain with Arteries Model

An educational economy model of the brain. Color markings illustrate arteries (red) and cranial nerves (yellow). Dissects into 8 parts. Life-size, on base. Key card included with 60 labeled structures. Size: 5" x 6" x 6".

C-20C Kit Care Brain with Arteries Model



Kit Care Giant Ear Model

Intended for elementary science classes, this model shows all major structures related to hearing and balance. Dissects into 3 parts. 4 times enlarged. Includes key card with 40 labeled parts. Size: 14" x 7" x 8½".

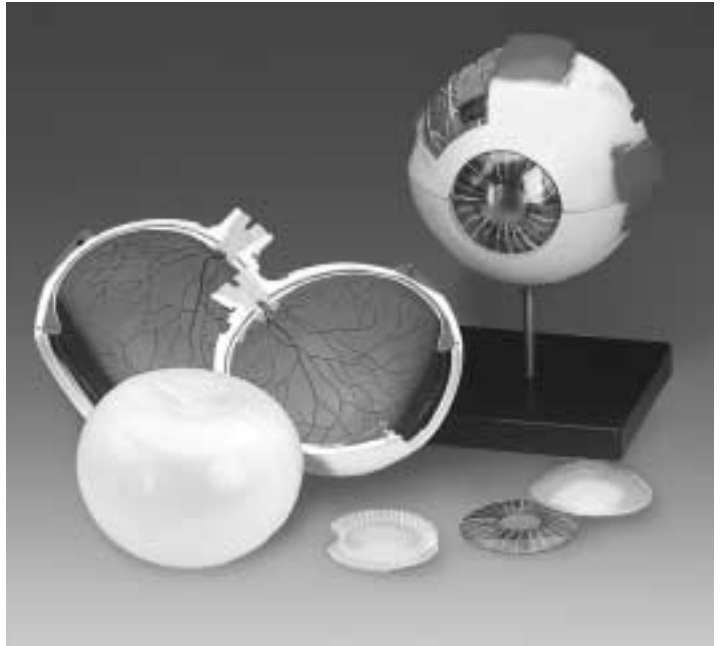
CH-8 Kit Care Giant Ear Model



Kit Care Youth Heart Model

This kit care heart model clearly shows the anatomy of the human heart. The front of the model can be removed to show the chambers and valves inside. Dissects into 2 parts. Removable from stand. Size: 3" x 3" x 5".

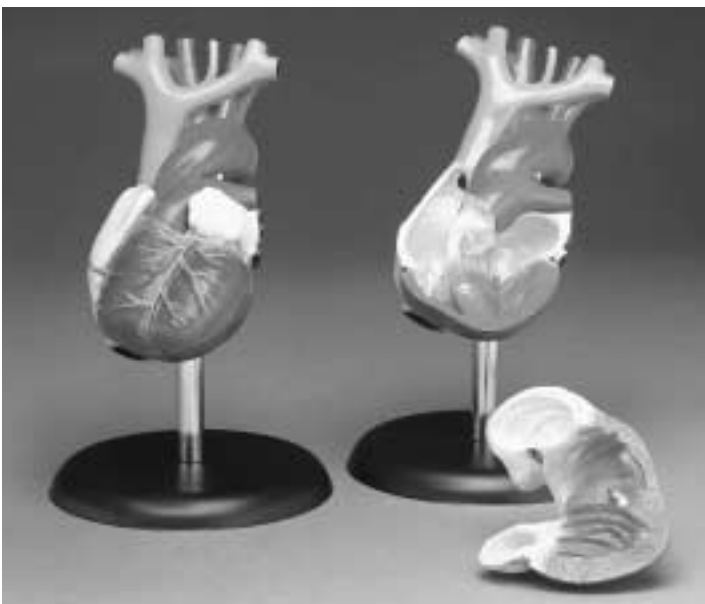
CH-G8 Kit Care Youth Heart Model



Kit Care Whopper Eye Model

A highly detailed eye model to satisfy beginning students. Dissects into 7 parts that include: top section, vitreous body, bottom section, lens (2 parts), iris, cornea. Mounted on a stand. Includes a key card with 41 structures labeled. 6-times enlarged. Size: 5 1/2" x 5 1/2" x 6 1/4".

CH-2 Kit Care Whopper Eye Model



Kit Care Life-Size Heart Model

An excellent, economical, life-size heart model. Anatomically accurate and great for learning basic external and internal anatomy of the heart. Dissects into 2 parts. Includes key card with 48 labeled structures. Size: W x W/4" x 6".

CH-7 Kit Care life-Size Heart Model



Kit Care Jumbo Heart Model

A 4-times life-size jumbo heart model excellent for patient education or elementary science classes. Dissects into 3 parts showing anterior, posterior and interior views along with valve details usually found only on more expensive models. Mounted on a stand. Includes a key card with 95 structures labeled. Size: W x W x 11 3/4".

CH-3 Kit Care Jumbo Heart Model



Kit Care Liver and Pancreas Model

An economical way to study the basic structures of the liver and pancreas. External structures are illustrated, as well as, the pancreatic duct of the pancreas. This model also shows the abdominal aorta and inferior vena cava. life-size. Dissects into 3 parts. Includes a key card with 48 labeled structures. Size: 9 $\frac{1}{4}$ " x 5" x 10 $\frac{1}{2}$ ".

CH-9 Kit Care Liver and Pancreas Model



Kit Care Kidney Model

A 2-times enlarged cross-sectional view of the human kidney. Explore the anterior surface on one side; turn it around and study the sectioned view. Does not dissect. Mounted on a stand. Includes a key card with 24 labeled parts. Size: 5 $\frac{1}{2}$ " x 5 $\frac{1}{2}$ " x 8 $\frac{1}{2}$ ".

CH-S Kit Care Kidney Model



Kit Care Bucky Skeleton

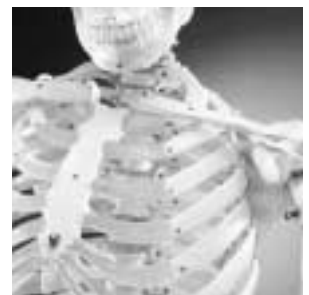
This economical, life-size articulated adult plastic skeleton is ideal for teaching the basics of anatomy when intricate textural nuances of the bone are not required. The arms and legs are removable for study. Features nerve branches, vertebral artery, and herniated lumbar disk. Skull includes movable jaw, cut calvarium, suture lines, and 3 removable lower teeth. Mounted on a stand. Complete with dust cover and skeletal system chart. Size: 5'6" tall. Express delivery extra-call for quote.

CH-10 Kit Care Bucky Skeleton

Numbered Kit Care Bucky Skeleton

The same model as CH-10 with the added feature of 200 numbered parts to identify the various bones. Mounted on a stand. Complete with dust cover, skeletal system chart, and comprehensive key card. Size: 5'6" tall. Express delivery extra-call for quote.

CH-ION Numbered Kit Care Bucky Skeleton





Mr. Thrifty Skeleton

An economical teaching skeleton with a user-friendly personality that will encourage children to learn the names of the bones, with details to satisfy students, doctors or anyone interested in the human skeleton. Key card and a heavy metal stand included. Removable calvarium. Size: 33 1/2" tall.

WCP1 Mr. Thrifty Skeleton



Flexible Mr. Thrifty Skeleton w/Spinal Nerves

A more advanced version of our Mr. Thrifty Skeleton, this valuable teaching aid features a flexible spine with spinal cord, nerve roots, the vertebral artery, a herniated disc, cartilage, and removable 3-piece skull and extremities. A popular desk-top model for rehabilitation, physical therapy and sports medicine professionals. A key card and deluxe stand are included. Size: 33 1/2" tall.

WCP- 1 NX Flexible Mr. Thrifty Skeleton with Spinal Nerves



My First Skeleton (Tiny Tim)

Our most popular miniature skeleton model offers a unique hands-on learning experience for young scientists, curious kids or medical professionals. Special features include a movable law on springs, a skull whose top half opens for a look inside, and arms and legs that are removable for individual study. Washable, unbreakable plastic. Stand included, along with an elementary skeleton chart and a detailed key card. Highly recommended. Size: 16 1/2" tall.

CH-10 Kit Care Bucky Skeleton



Full Disarticulated Kit Care Skeleton with Skull

Life-size, disarticulated adult skeleton includes 3-part skull, left hand and left foot on wire. Also available but not shown is our one-half disarticulated adult skeleton which includes the left hand and left foot on wire. Express delivery extra-call for quote.

CHA-5/1 Full Disarticulated Skeleton with Skull

CHA-4/1 One-Half Disarticulated Kit Care Skeleton with Skull



Kit Care Skull with 8-Part Brain

Durable plastic skull with hinged jaw and removable calvarium. life-size translucent 8-part brain fits inside cranial cavity. Includes key card with 75 structures identified. Size: 5" x 8½" x 6". Weight: 7 lbs.

MO-12C Kit Care Skull with 8-Part Brain



Miniature Skull with 8-Part Brain

This miniature skull model shows the major sutures of the human skull. The calvarium can be removed to expose the 8-part brain. The mandible is spring hinged. Made of unbreakable plastic. Skull size: 3" x 3½" x X/2". Brain size: 2½" x 2½" x 2¼".

WCP-5B Miniature Skull with 8-Part Brain



Kit Care Skull with Cervical Vertebrae on Stand

This life-size skull includes 7 cervical vertebrae, nerve 1 branches and vertebral artery. Calvarium and hinged lower jaw may be removed. Mounted on a stand.

CS-20V Kit Care Skull with Cervical Vertebrae on Stand



Kit Care Transparent Skull

Life-size skull features a removable calvarium and a spring mounted jaw. Cast in translucent plastic. Size: 5" x 8½" x 6".

CS-20CL Kit Care Transparent Skull



Kit Care Skull

This economical life-size adult plastic skull features a movable jaw, cut calvarium, suture lines, and 3 removable lower teeth - incisor, cuspid, and molar. Dissects into 3 parts. Includes key card with 75 structures identified. Size: 5" x 8½" x 6". Weight: 5 lbs.

CS-20 Kit Care Skull



Kit Care Vertebral Column

Highly detailed, life-size model shows all significant features for each vertebra, including vertebral body, spinous and transverse processes, vertebral notch and spinal canal. Features complete pelvis, sacrum, occipital bone, vertebral artery and nerve branches. Herniated disc between the 3rd and 4th lumbar vertebrae. Ideal teaching model for students, for patient education by chiropractors, orthopedic surgeons and other medical professionals, and for company health programs on lifting and bending. Size: 29" tall. Weight: 11 lbs. Express delivery extra-call for quote.

CH-59X Kit Care Vertebral Column



Flexible Desk-Size Vertebral Column

This detailed, lifelike spine features nerve branches, vertebral artery, movable femur heads, occipital bone, pelvis, and herniated lumbar disc. Stand and key card with 54 structures identified are included. Size: 18 1/2" tall. Weight: 6 lbs.

CS-85X Flexible Desk-Size Vertebral Column



Kit Care Lumbar Vertebrae with Interchangeable Discs

This life-size, kit care priced lumbar model demonstrates what a herniated disc looks like in relation to the vertebrae and the spinal cord. Included are 3 interchangeable discs: normal, central herniation and dorsal herniation. Dissects into 6 parts. Made of durable, flexible plastic. Mounted on a base. Size: 4 3/4" x 4 3/4" x 5 1/4".

CH-76 Kit Care Lumbar Vertebrae with Interchangeable Discs